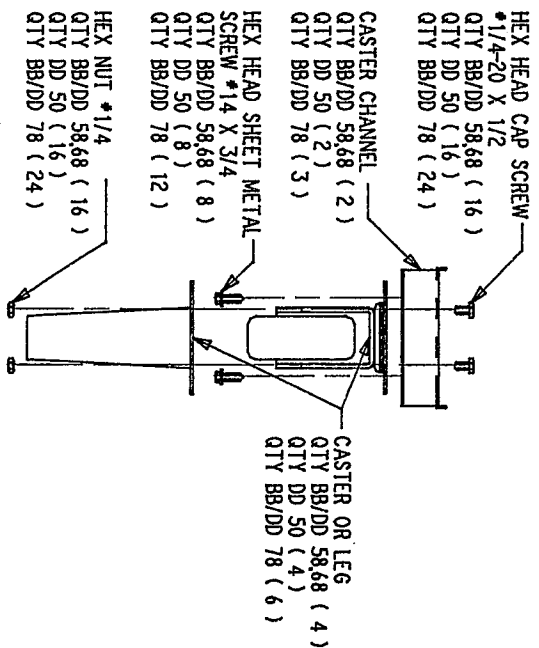


THIS CHANNEL ASSEMBLY  
 USED ON BB/DD 78 ONLY.



HEX HEAD CAP SCREW

\*1/4-20 X 1/2  
 QTY BB/DD 58,68 ( 16 )  
 QTY DD 50 ( 16 )  
 QTY BB/DD 78 ( 24 )

CASTER CHANNEL  
 QTY BB/DD 58,68 ( 2 )  
 QTY DD 50 ( 2 )  
 QTY BB/DD 78 ( 3 )

HEX HEAD SHEET METAL  
 SCREW \*1/4 X 3/4  
 QTY BB/DD 58,68 ( 8 )  
 QTY DD 50 ( 8 )  
 QTY BB/DD 78 ( 12 )

CASTER OR LEG  
 QTY BB/DD 58,68 ( 4 )  
 QTY DD 50 ( 4 )  
 QTY BB/DD 78 ( 6 )

HEX NUT \*1/4  
 QTY BB/DD 58,68 ( 16 )  
 QTY DD 50 ( 16 )  
 QTY BB/DD 78 ( 24 )

INSTALLATION OF CASTERS OR LEGS FOR BB/DD :

1. DISCONNECT ELECTRIC POWER SUPPLY.
  2. REMOVE ANY PRODUCT FROM CABINET.
  3. PLACE SOFT PAD BY REAR OF UNIT AND CAREFULLY TIP CABINET ON ITS BACK.
  4. ATTACH CASTERS/LEGS TO CHANNEL USING 1/2" LONG SCREWS AND NUTS PROVIDED ( SEE DETAIL 'A' ). TIGHTEN WITH APPROPRIATE WRENCHES. THEN SECURE CHANNEL ASSEMBLY TO CABINET USING THE 3/4" LONG HEX HEAD SCREWS PROVIDED ( SEE DETAIL 'A' ). TIGHTEN WITH APPROPRIATE WRENCHES. RETURN CABINET TO UPRIGHT POSITION.
- NOTE: CABINET MUST REMAIN IN UPRIGHT POSITION FOR 30 MINUTES BEFORE RECONNECTING TO POWER SUPPLY.
5. RECONNECT TO ELECTRIC POWER SUPPLY.
  6. REPLACE PRODUCT WHEN CABINET HAS REACHED OPERATING TEMPERATURE.

DETAIL 'A' ( TYP. )