

## BOTTLE COOLERS

MODEL:  MXCR50BHC  MXCR65BHC  MXCR96BHC



MXCR50BHC



MXCR65BHC



MXCR96BHC

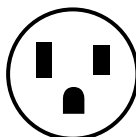
Maxx Cold Bottle Coolers with top access are ideal for keeping bottled or canned beverages cold and accessible. The spacious stainless steel interior houses a LED light to illuminate contents. The built-in bottle opener and bottle cap catcher make this unit efficient and functional for high volume operations. The durable black steel exterior compliments bars and other entertainment applications, while the rear shelf with marine edge provides additional prep counter space.

### FEATURES AND CONSTRUCTION

- Black painted steel exterior
- Stainless steel rear top with marine edge and interior
- Two (2) or three (3) sliding top lids
- Built-in bottle opener with bottle cap catcher
- Equipped with four (4) or six (6) 1.7" rollers for mobility
- Equipped with two (2) or three (3) adjustable internal dividers
- Solid state digital controls with LED temperature display
- Energy efficient interior LED lighting
- Equipped with integrated condensate evaporator therefore no drain line connection is needed
- Urethane foam insulated walls and doors
- Front-breathing refrigeration system

### ELECTRIC

115V / 60Hz / 1Ph  
 (230V / 50-60Hz / 1Ph is available as an option)  
 6' (2m) NEMA 5-15P cord set included



NEMA 5-15P

### 3RD PARTY APPROVALS



Intertek

Certified to ANSI NSF 7



Intertek

Certified to ANSI UL 471



Zero Ozone Depletion Potential



DOE 2017 Compliant

### MAXX COLD WARRANTY (USA / CANADA)

Contact Maxx Cold for warranty statement at  
 TechnicalServices@TheLegacyCompanies.com or 877.368.2797

### NET STORAGE CAPACITY (Cu Ft (L) / CANS / BOTTLES) -

MXCR50BHC.....	14 Cu Ft (396 L) / 504 / 336
MXCR65BHC.....	17 Cu Ft (481 L) / 768 / 504
MXCR96BHC.....	26 Cu Ft (736 L) / 1250 / 824

### TEMPERATURE

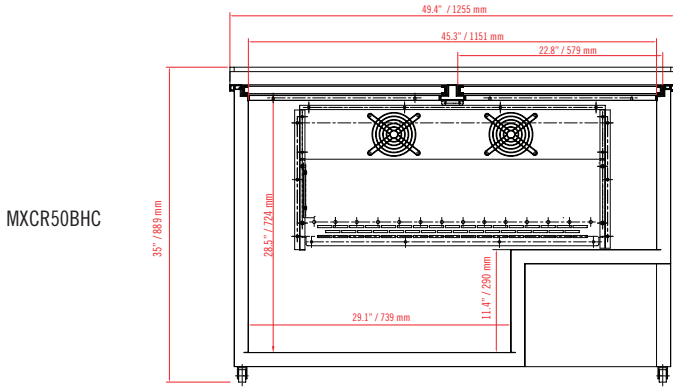
Holding temperature ..... 33°F to 41°F (1°C to 5°C)

- Solid-state controls and forced-air system deliver consistent, easily adjustable temperature performance

# MAXX COLD BOTTLE COOLERS

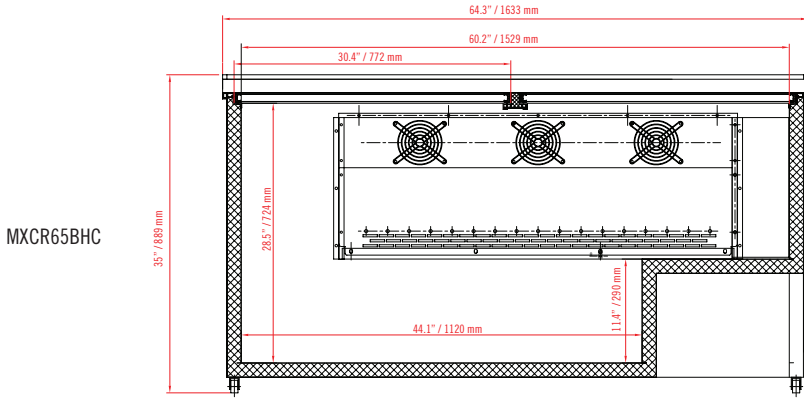
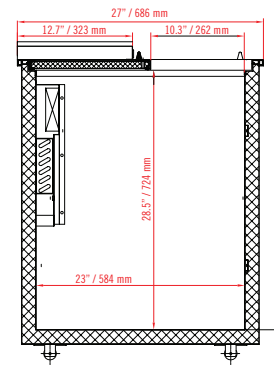
*X-series*

FRONT VIEW

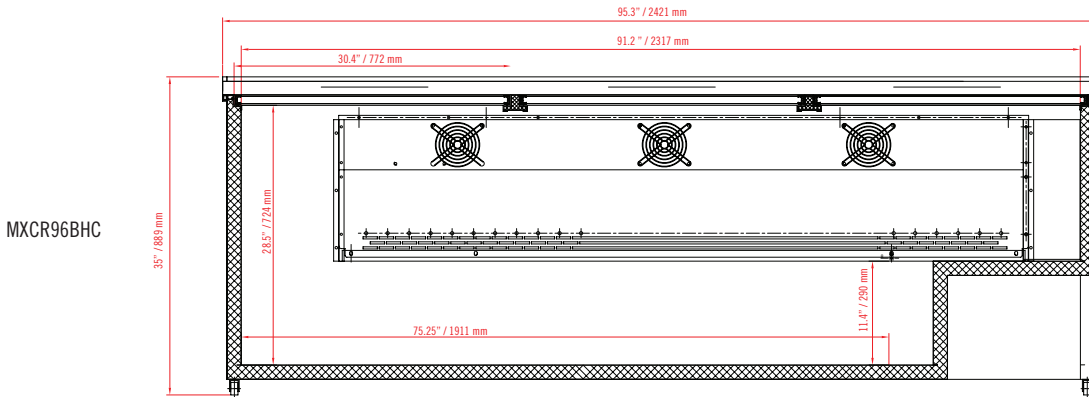


MXCR50BHC

SIDE VIEW  
(ALL MODELS)



MXCR65BHC



MXCR96BHC

MODEL	EXTERNAL DIMENSIONS	NET CAPACITY	CAN / BOTTLE CAPACITY	HOLDING TEMPERATURE RANGE	AMP DRAW	SHIPPING WEIGHT	REFRIGERANT AND CHARGE SIZE	LIDS / DIVIDERS	ELECTRICAL
MXCR50BHC	49.4" x 27" x 35" (1255 x 686 x 889 mm)	14 Cu Ft (396 L)	504 Cans 336 Bottles	33°F to 41°F (1°C to 5°C)	3A	205 lb 93 kg	R-600a 2.47 oz (70 g)	2 / 2	115V / 60Hz / 1Ph
MXCR65BHC	64.3" x 27" x 35" (1633 x 686 x 889 mm)	17 Cu Ft (481 L)	768 Cans 504 Bottles	33°F to 41°F (1°C to 5°C)	3A	280 lb 128 kg	R-600a 3.17 oz (90 g)	2 / 2	115V / 60Hz / 1Ph
MXCR96BHC	95.3" x 27" x 35" (2296 x 686 x 889 mm)	26 Cu Ft (736 L)	1250 Cans 824 Bottles	33°F to 41°F (1°C to 5°C)	3.3A	500 lb 227 kg	R-290a 3.53 oz (100 g)	3 / 3	115V / 60Hz / 1Ph

## INSTALLATION

- Shorter caster options are available to lower the overall height of the unit to satisfy ADA or other low profile requirements