

BIZERBA

Installation Requirements GS 68M Proofer, 2x EBO 68L, 68 Steam Reducer

NOTE: Electrical Requirement

208Vac 3ph+GND 4-wire
(120Vac Phase to GND and 208Vac Phase to Phase)

Important Dimension Notes:

Door and pathway dimensions required after station is removed from shipping pallet at the loading dock or receiving area

Width = 37"

Depth = 62" this measurement is important if there are tight turns

Height = 70"

Configuration:

Steam reducer: 208V/ 60 Hz/ single phase/ outlet 15A NEMA

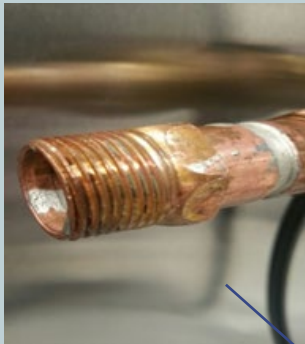
EBO 68L: 208V/ 60 Hz/ 3 phase/ outlet 30A NEMA

EBO 68L: 208V/ 60 Hz/ 3 phase/ outlet 30A NEMA

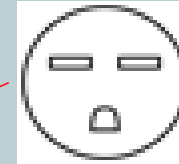
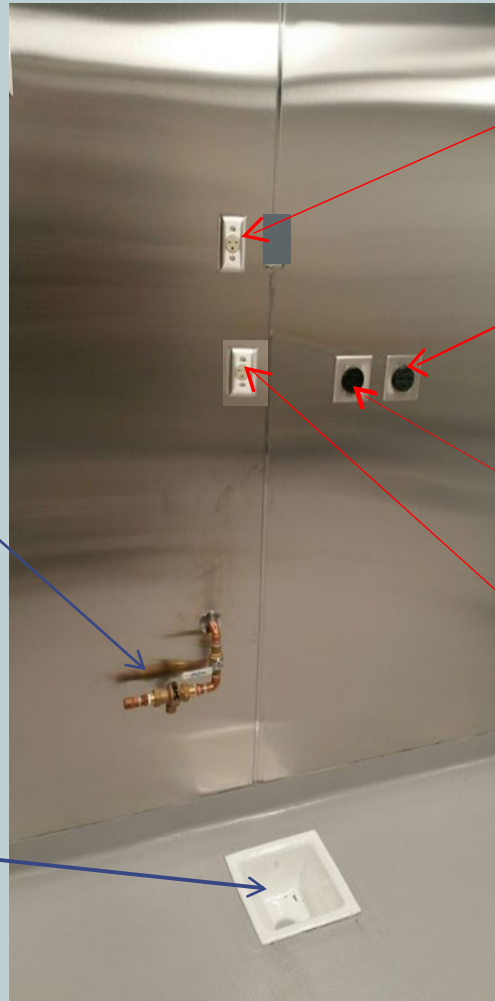
GS 68M Proofer: 208V/ 60 Hz/ single phase/ outlet 15A NEMA



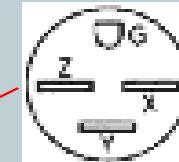
Installation Requirements GS 68M Proofer, 2x EBO 68L, 68 Steam Reducer



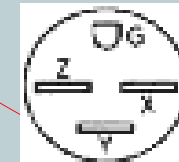
3/4" MIP (male iron pipe)
water supply with shut off
valve (27.2 – 87 PSI)



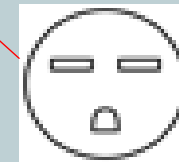
Steam Reducer
NEMA Receptacle **6-15R**
1-Phase 208V 15Amp 60HZ



30amp - EBO 68L
NEMA Receptacle **15-30R**
3-Phase 208V 30amp 60HZ

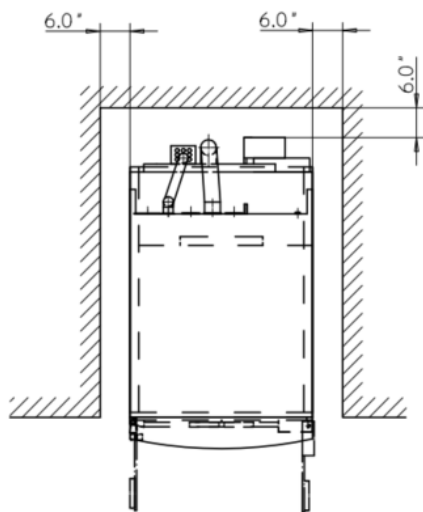
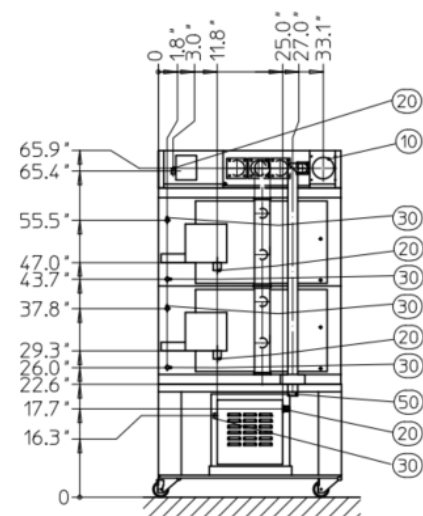
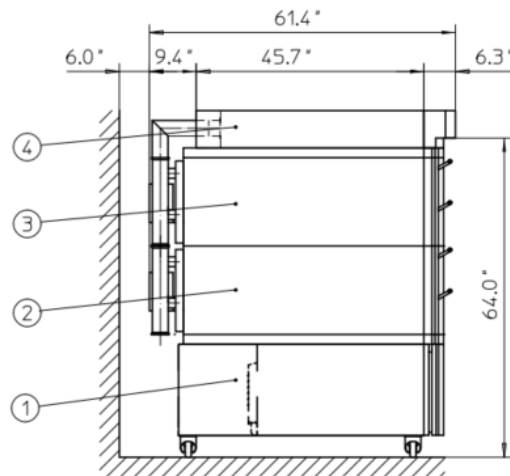
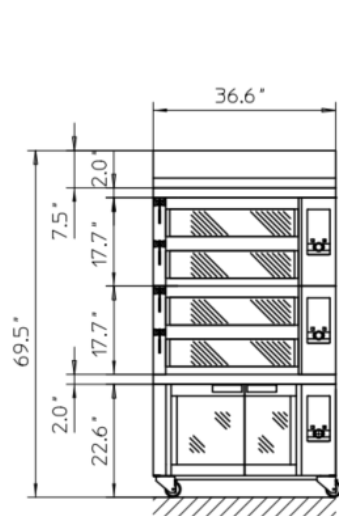


30amp - EBO 68L
NEMA Receptacle **15-30R**
3-Phase 208V 30amp 60HZ



GS 68M Proofer
NEMA Receptacle **6-15R**
1-Phase 208V 15Amp 60HZ

Floor drain



Alle weiteren Informationen entnehmen Sie den aktuellen und gültigen technischen Datenblättern

All other information can be found in the current and valid technical data sheets

- ⑩ Anschluss Abluft / exhaust air
- ⑫ Anschluss Strom / power connection
- ⑬ Anschluss Wasser / water connection
- ⑭ Anschluss ProClean / connection ProClean
- ⑮ Anschluss Ablauf / wastewater connection

Aufstellplan unterliegt nicht dem Änderungswesen
Floor plan is not subject to the Change Management

| Geräte | | Abmessungen | | Schutzvermerk zur Beschränkung der Nutzung nach DIN ISO 9006 beachten | | Allgemeintoleranz ISO 2768 - v | | Maßstab | |
|--------|----------|-----------------------|------|---|-------|--------------------------------|-------|--|--|
| | | 69,5" x 36,6" x 61,4" | | | | | | 1 : 20 | |
| 8 | --- | h | --- | - | - | - | - | Abkürzungen GS68 M UL (575) + 2x Ebo68 L UL + ALH 68 UL | |
| 7 | --- | g | --- | - | - | - | - | | |
| 6 | --- | f | --- | - | - | - | - | | |
| 5 | --- | e | --- | - | - | - | - | | |
| 4 | X0468 | d | --- | - | - | - | - | | |
| 3 | X0772 | c | --- | - | - | - | - | Zeichnungsnummer A_000-X85-700 | |
| 2 | X0772 | b | --- | - | - | - | - | | |
| 1 | X0607 | a | --- | - | - | - | - | | |
| Pos | Ank.-Nr. | Bezeichnung | Änd. | Änderung | Datum | gez. | gepr. | Änd. Bl. 1 von 1 | |

WIESHEU